

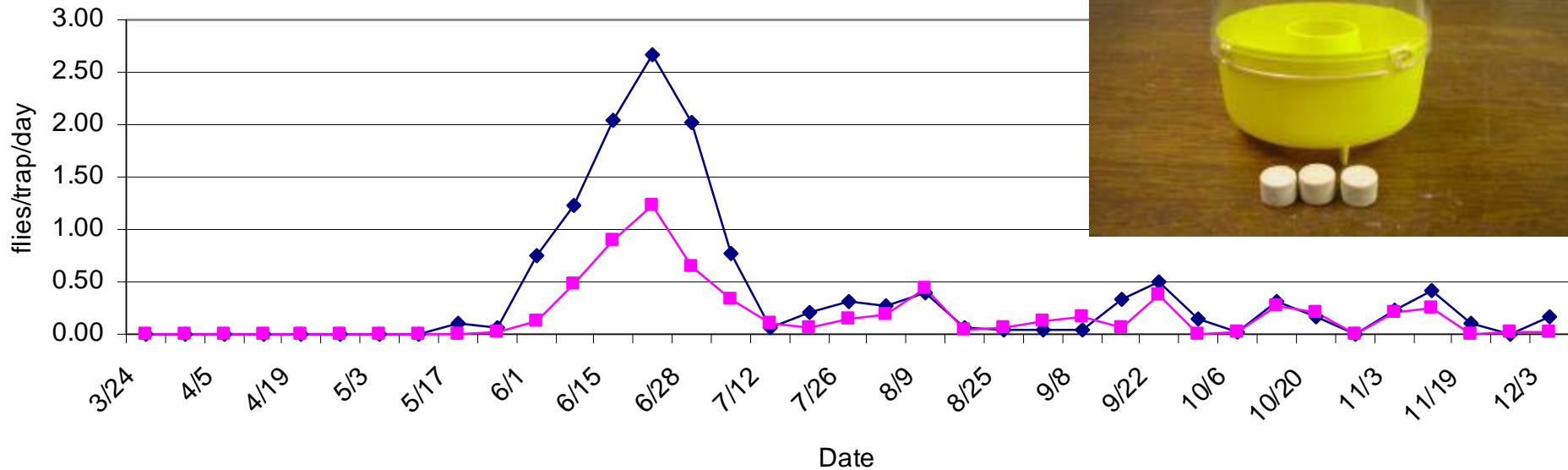
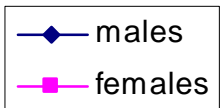
# Olive Fruit Fly Observations, 2004, 2005 and plans for 2006

Bill Krueger

UCCE Glenn and Tehama  
Counties

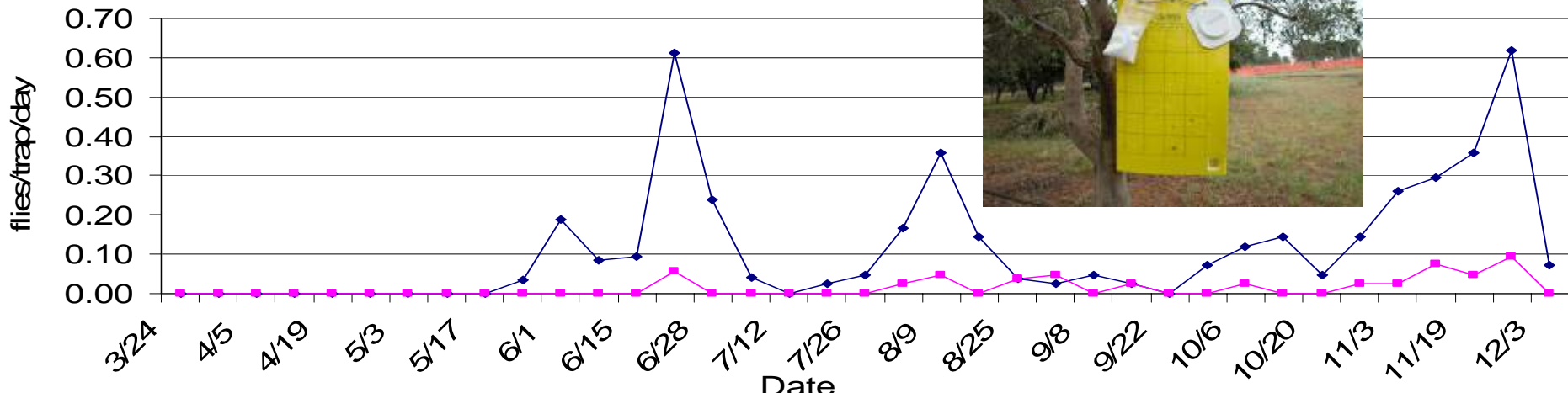
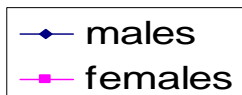
## 2004 McPhail Trap Catches

Glenn Co. UCCE

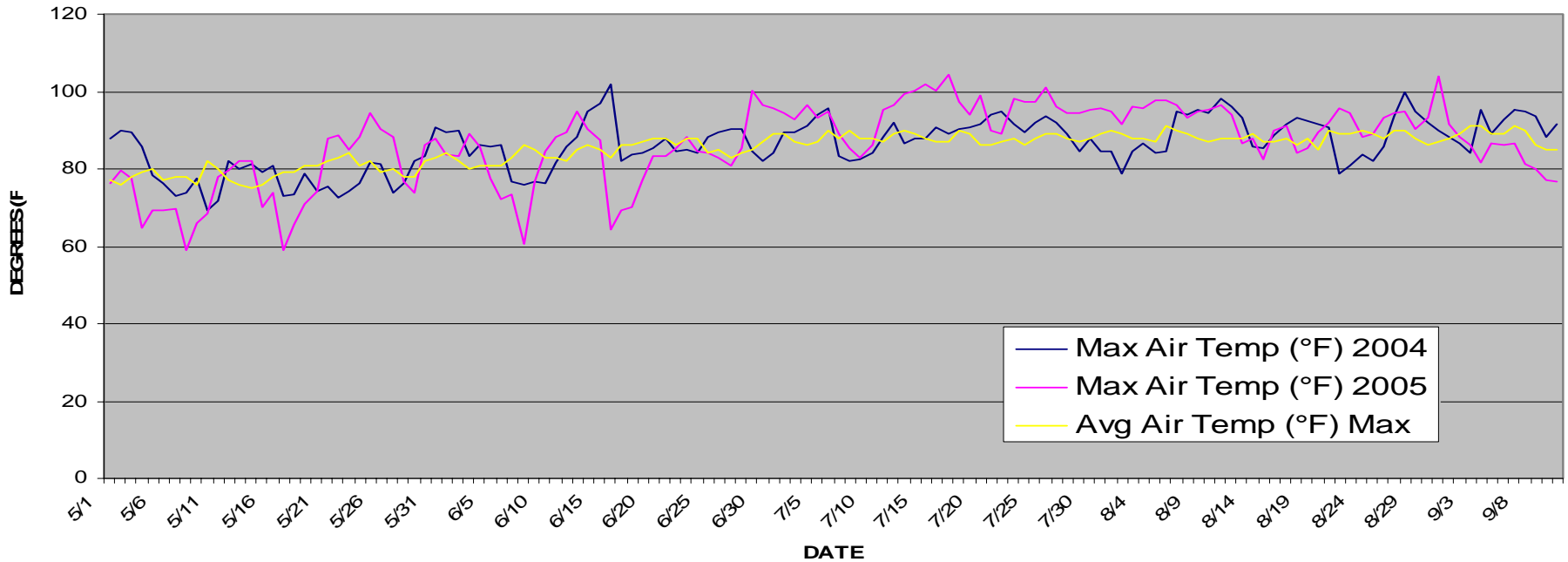


## 2004 Sticky Trap Catches

Glenn Co. UCCE

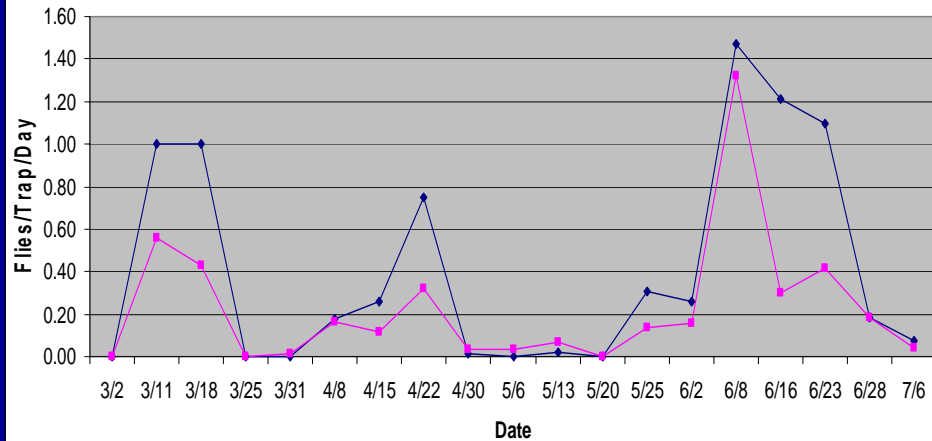


# Maximum Air Temperatures for Orland, CA (From May 1-Sept. 11)



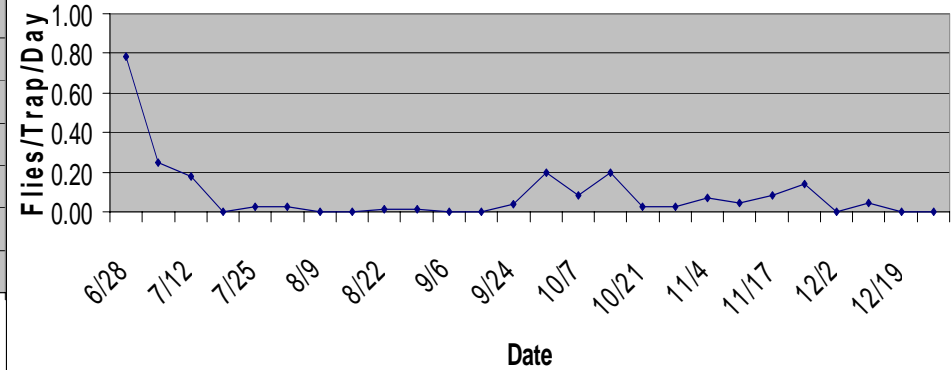
## 2005 McPhail Trap Catches GCCE

◆ Male  
◆ Female



## 2005 McPhail Trap Catches (Untreated Olive Orchards monitored by GCCE)

◆ M&F



# Plans for 2006

- Monitor OFF in 4 locations
  - Two in Glenn County and two in Tehama County
- Use Plastic McPhail traps
- Post information to web site weekly
  - [ceglenn.ucdavis.edu](http://ceglenn.ucdavis.edu)